

# SKETCH/AREA TABLE ADDENDUM

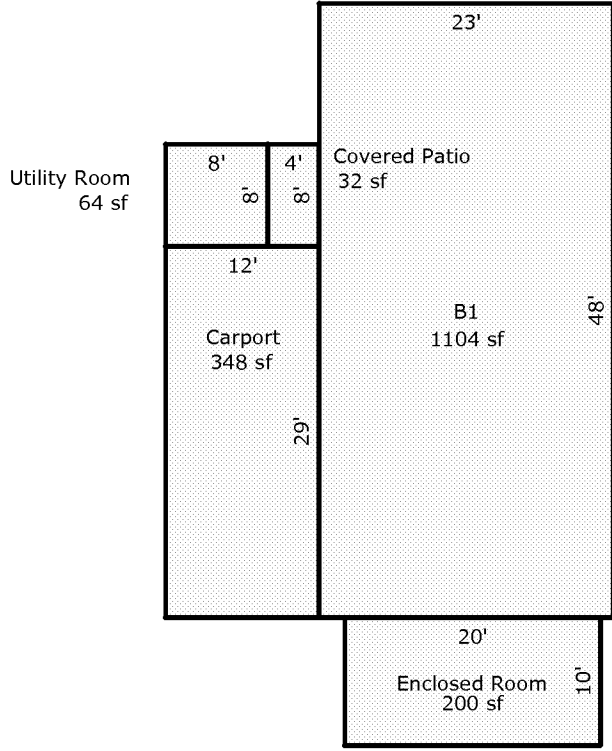
DATE 10/13/2010

RE # 3003142

SUBJECT

PARCEL ID 30-38-09-JS-138-18			
CITY BAREFOOT BAY	COUNTY BREVARD	STATE FL	ZIP 32976
PERMIT # NONE			
MARKET AREA 152000	ADDRESS 1033 GOLDFINCH COURT		
APPRAISER NAME JTC	BRANCH OFFICE VIERA		

IMPROVEMENTS SKETCH



Scale: 1 = 15

AREA CALCULATIONS

### AREA CALCULATIONS SUMMARY

Code	Description	Factor	Net Size	Perimeter	Net Totals
B1	B1	1.00	1104	142	1104
UT	Utility Room	1.00	64	32	64
CRPRT	Carport	1.00	348	82	348
CVPRT	Covered Patio	1.00	32	24	32
ENCLR	Enclosed Room	1.00	200	60	200

#### Comment Table 1

--

#### Comment Table 2

#### Comment Table 3

--	--