

# SKETCH/AREA TABLE ADDENDUM

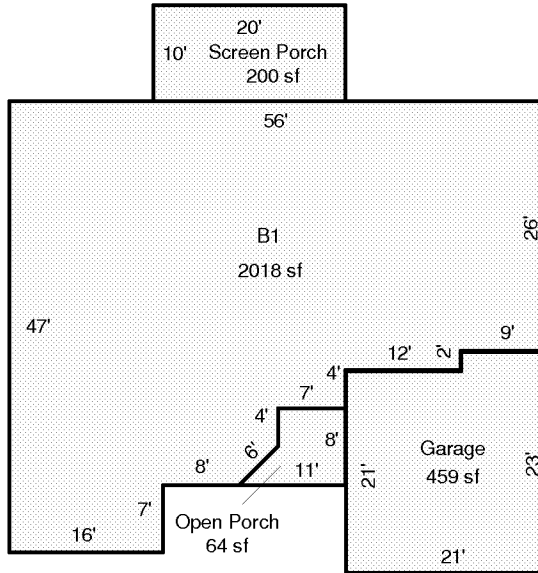
DATE 6/7/10

RE # 2921638

SUBJECT

PARCEL ID	29-36-36-KJ-1439-22		
CITY	PALM BAY	COUNTY	BREVARD
		STATE	FL
		ZIP	32908
PERMIT #	R		
MARKET AREA	14	ADDRESS	3291 FITZPATRICK AVE SW
APPRAISER NAME	GAC	BRANCH OFFICE	PALM BAY

IMPROVEMENTS SKETCH



Scale: 1 = 20

AREA CALCULATIONS

### AREA CALCULATIONS SUMMARY

Code	Description	Factor	Net Size	Perimeter	Net Totals
B1	B1	1.00	2018	204	2018
GA	Garage	1.00	459	88	459
OP	Open Porch	1.00	64	36	64
SP	Screen Porch	1.00	200	60	200

#### Comment Table 1

--

#### Comment Table 2

#### Comment Table 3

--	--